

# KD-810 (VACUUM SUCTION) POUCH DISPENSER



*HIGH SPEED  
Dispensing  
at 200pcs / minute*

Adopted with high speed suction unit LV-200-L



## Features

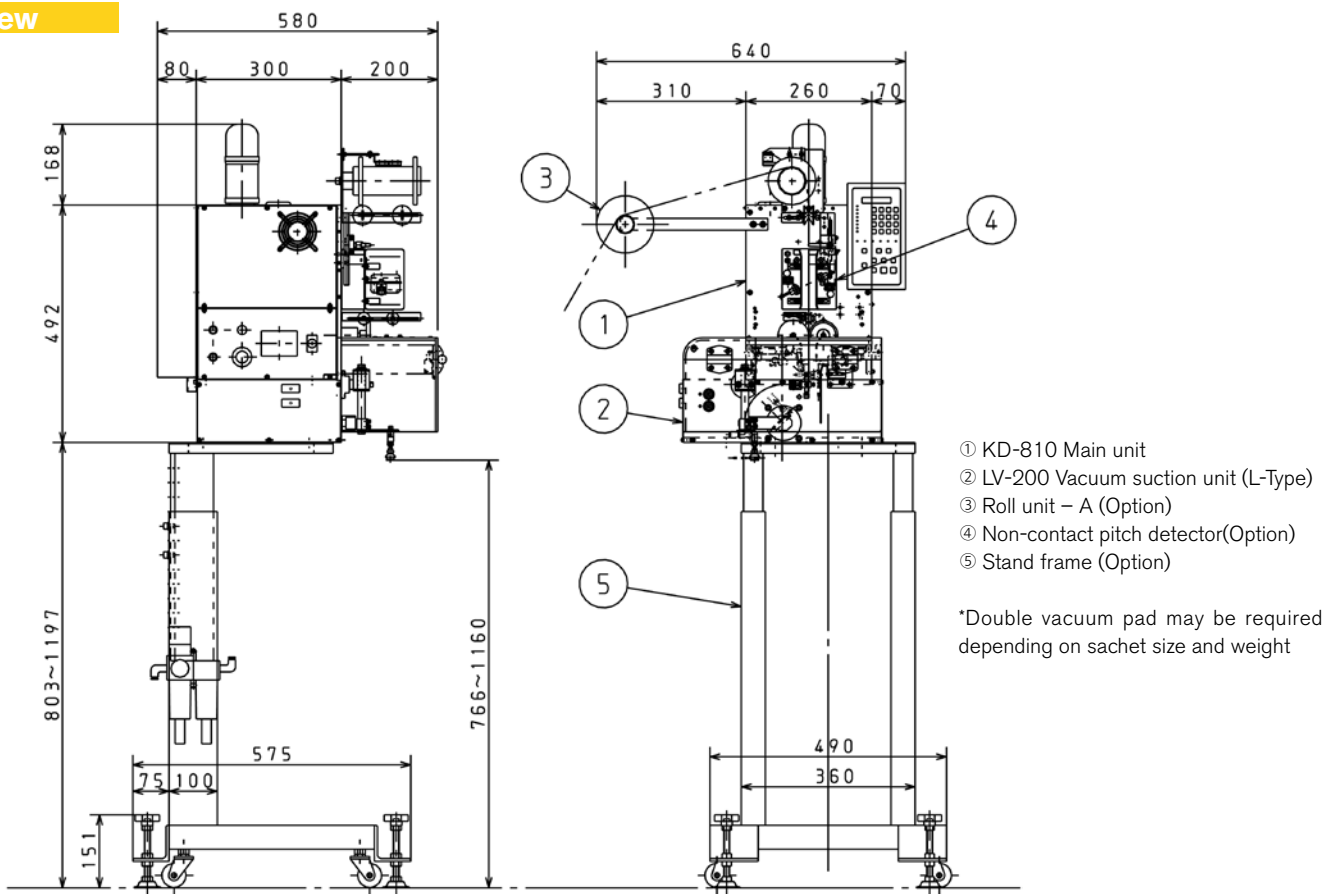
- Maximum capacity of 200pcs/minute, high speed type
- AC servo motor drive for quick & accurate dispensing without time lag
- Sachet position secured by simultaneous suction & cutting
- Suitable for right-angle dispensing to packing machine
- Light weight sachets are dispensed without being effected by static electricity
- Cutting & sticking of sachet by combining with our TM-200 Taping Machine

## Basic Specs

KD-810 Main unit + LV-200

Capacity	Max. 200 sachets / minute (at sachet length of 70mm)
Sachet Specification	Width: 20 – 80mm Length: 25 – 90mm Thickness: 1 – 10mm
Equipment Dimension	640mm (W) × 660mm (H) × 580mm (D)
Cutting Accuracy	≧± 1.5mm
Power	AC200/220V, 50/60Hz, 3 Phase, 1.5kVA
Weight	Main unit 46kg
Air utility	0.5MPa 150 ℓ /min. (ANR)

## Overview



### 株式会社 三橋製作所 MITSUHASHI CORPORATION

- Head Office/  
Factory
 1 Sekizan-cho Yamanouchi Ukyo-ku Kyoto  
615-0082 Japan
- Tokyo Office/  
Overseas Sales Division
 Yoshikuni Komagata Bldg. 9F 2-4-11 Komagata  
Taitoh-ku Tokyo 111-0043 Japan
- Kyushu Office
 Minamikindai Building 6F, 4-2-10 Hakataekiminami  
Hakata-ku Fukuoka 812-0016 Japan

